

I. H. 682.62

12.50  
10.90

**Scott St. Sewer Separation**  
**Res # 830**

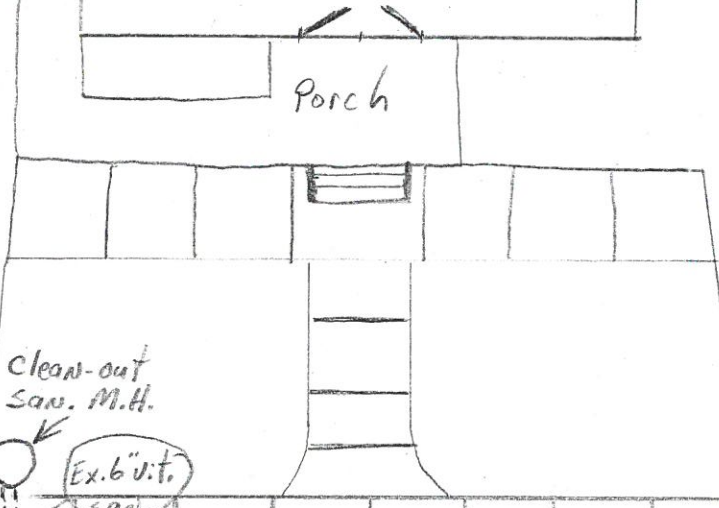
Date Installed:  
9-18-01

Installed by:  
S.E. Johnson

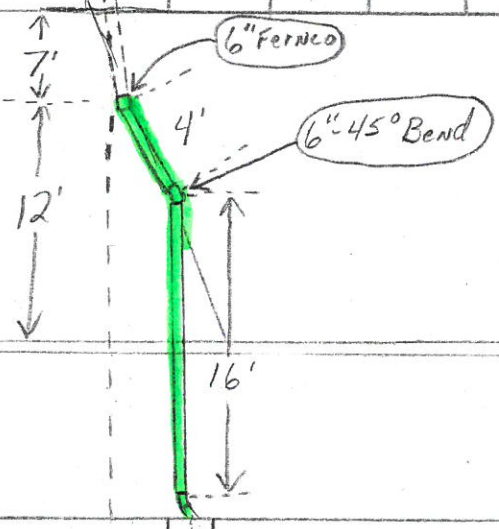
Inspected by:  
Rex Moll

**Snyder - Wesche**  
**Funeral Home**

Total of 6" SDR<sup>35</sup> pipe  
20' L.F.



Clean-out  
San. M.H.  
Ex. 6" v.t. San.



15" San. Sewer

106'  
109'

Measurements from  $\phi$  of  
up-stream San. M.H.

Main Elev. 670.12  
Hook-up Elev. 671.72

677.16  
5.46  
I.H. 682.62

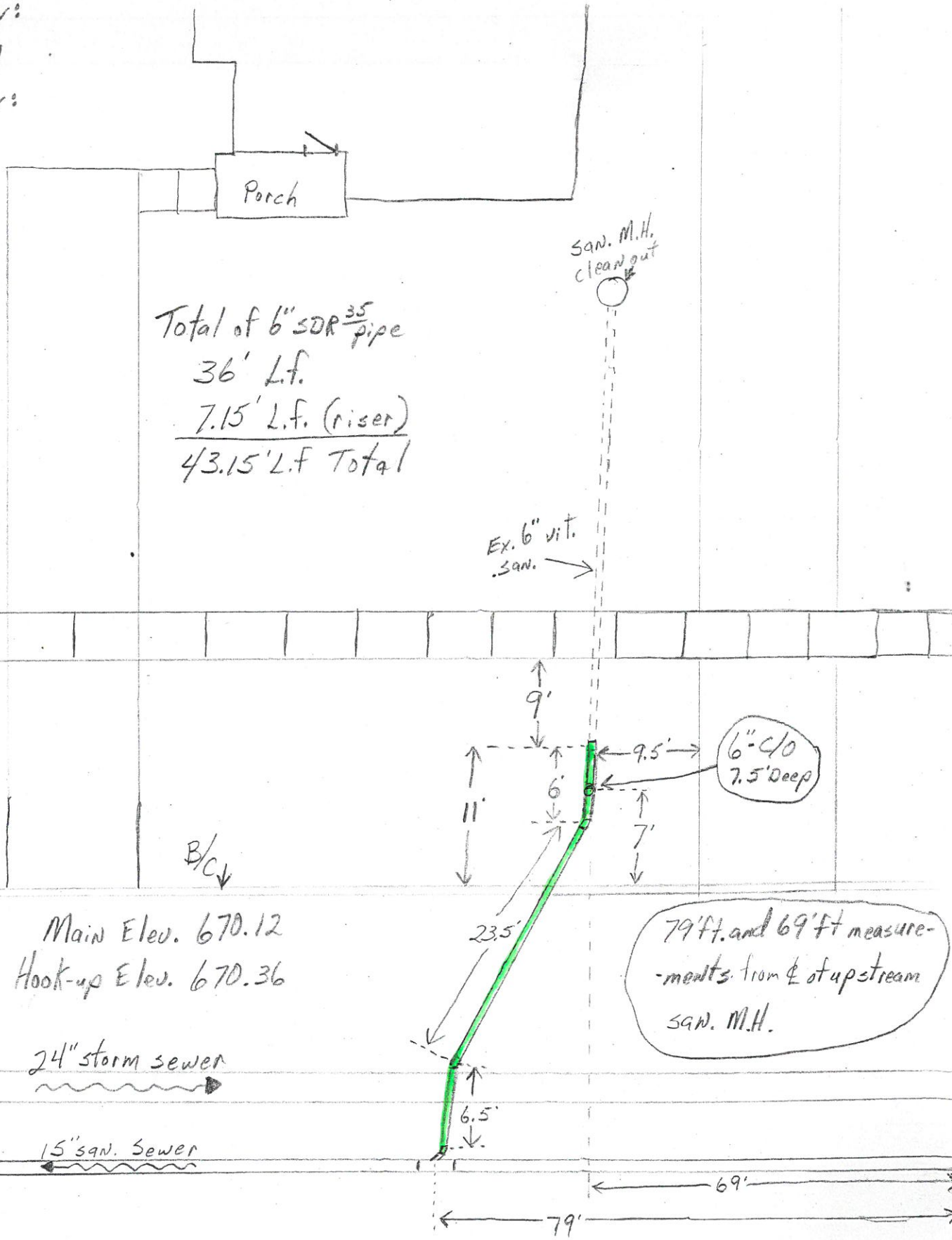
Main 12.50  
house 12.26

Date Installed:  
9-18-01

Scott St.  
Res # 831

Sewer Separation

Installed by:  
S.E. Johnson  
Inspected by:  
Rex Moll



Total of 6" SDR<sup>35</sup> pipe  
36' L.f.  
7.15' L.f. (riser)  

---

43.15' L.f. Total

San. M.H.  
clean out

Ex. 6" vit.  
San.

6" C/O  
7.5' Deep

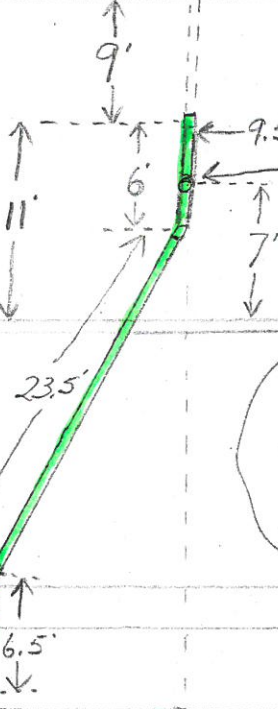
79 ft. and 69 ft. measurements from & of upstream San. M.H.

Main Elev. 670.12  
Hook-up Elev. 670.36

24" storm sewer

15" San. Sewer

B/C



79'  
69'

I.H. 682.62

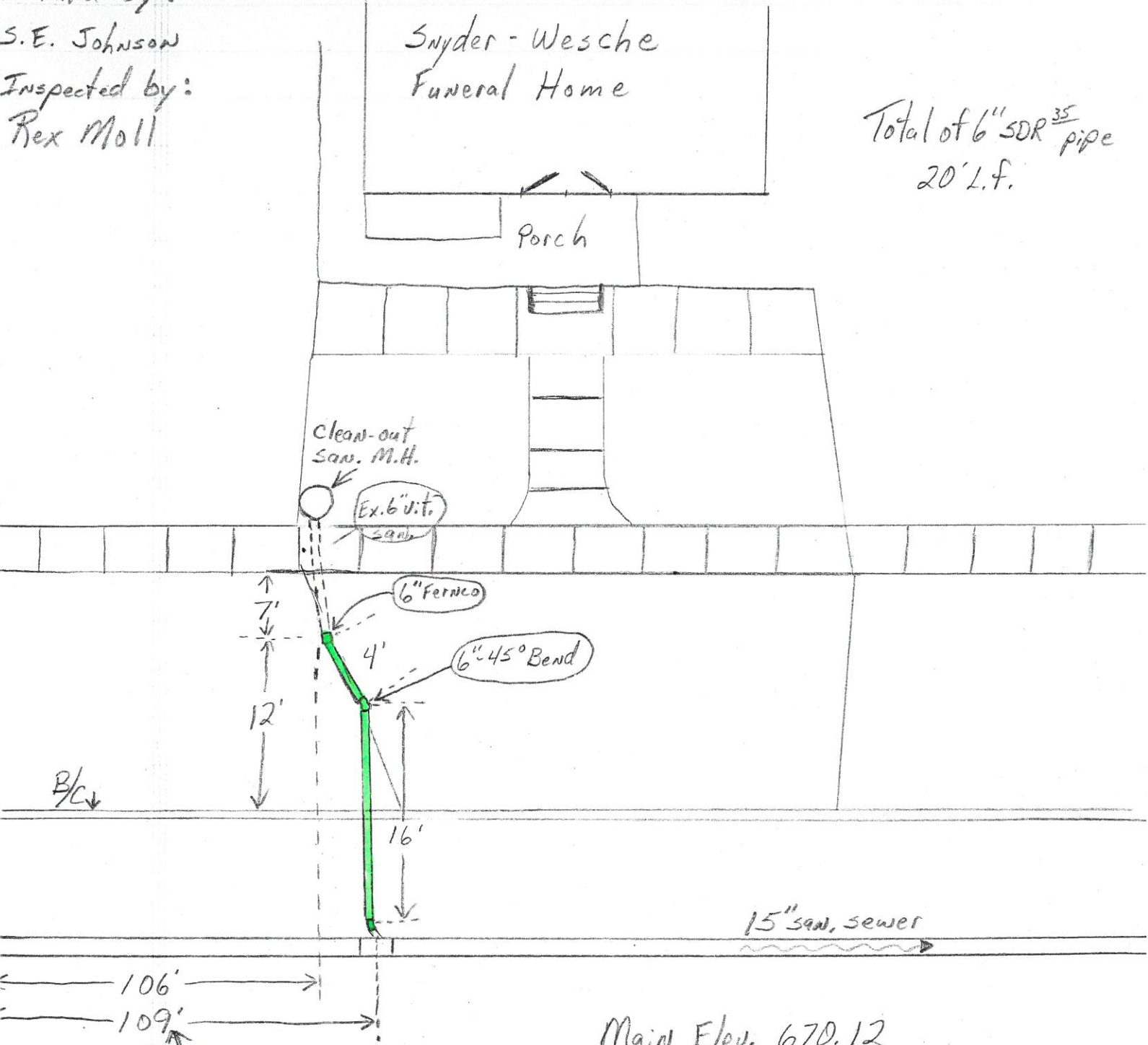
12.50  
10.90

Date Installed:  
9-18-01

**Scott St. Sewer Separation**  
**Res # 830**

Installed by:  
S.E. Johnson  
Inspected by:  
Rex Moll

Total of 6" SDR<sup>35</sup> pipe  
20' L.F.



Measurements from  $\phi$  of  
up-stream San. M.H.

Main Elev. 670.12  
Hook-up Elev. 671.72